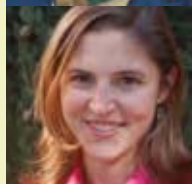
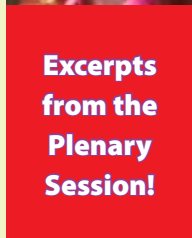




▶ THINKING GENDER 20071



▶ FROM THE COORDINATOR BY EMILY S. CARMAN3



▶ EXCERPTS FROM THE PLENARY SESSION 4-12

The Commodification of a Cactus by Laura Foster; *Chinese Chickens, Ducks, Pigs and Humans, and Technoscientific Orientalism* by Gwen D'Arcangelis; *Wolf Children and the Discourse of Animality* by Dipika Nath; and *Categories and the Legal Human* by Kris Weller



▶ "TELEVISION AND GENDERED DIS-ARTICULATIONS": REVIEWS BY JENNIFER PORST, BY KELLY AGPAWA, SARAH WEISMULLER . 13-16



▶ "NEGOTIATING MASCULINITY AND SEX": REVIEW BY KRISTEN BARBER17



▶ MOVIES, MOHAWKS, AND WHAT TO WEAR BY MAYA MONTAÑEZ SMUKLER 18-20



▶ "ISSUES OF TRANSNATIONALISM AND GENDER": REVIEW BY RANA SHARIF20



▶ HILARY PFEIFER21

CSW update is a monthly PDF/ web publication of the UCLA Center for the Study of Women.

EDITOR/DESIGNER:
Brenda Johnson-Grau

UCLA CENTER FOR THE STUDY OF WOMEN

DIRECTOR:
Kathleen McHugh
ASSISTANT DIRECTOR:
April de Stefano

FINANCIAL MANAGER:
Van DoNguyen

MANAGING EDITOR:
Brenda Johnson-Grau

ADMINISTRATIVE ASSISTANT:
Jessie Babiarz

EDITORIAL ASSISTANTS:
Alessandra Brophy, Amy Chen, and Sarah Cho

BOX 957222
PUBLIC POLICY 1400H
LOS ANGELES, CA 90095-7222

CAMPUS MAILCODE: 722203

310-825-0590
310-825-0456 (FAX)
CSW@CSW.UCLA.EDU

PUBLICATIONS UNIT

BOX 951504
2210 ROLFE HALL
LOS ANGELES, CA 90095-1504

CAMPUS MAILCODE: 150402

310-206-5487
CSWPUBS@WOMEN.UCLA.EDU